

atmosfera 

The unexpected feel

atmosfera 
The unexpected feel

ABOUT

6

CERAMICS

9

COLLECTIONS

ORCHESTRA	38
EXTENDABLE TABLES	48
DE ARCHITECTURA	58
NEOCLASSICO	90
BASILICA	96
SYMPHONY	102
I GENI DELL'ARTE	118
BATHROOM ACCESSORIES	132
CUSTOM MADE	174
TECHNICAL FEATURES	198

ABOUT

Atmosfera is an original project that celebrates our passion for ceramics through the foundation of new proposals for the world of furniture and accessories.

Material becomes a vehicle of emotions, creating unique scenarios that are both evocative and real. Surfaces can give a specific character to spaces, creating always different atmospheres.

The multidisciplinary, the inclusion of different figures working in synergy and the quality of Made in Italy are the major strengths of Atmosfere, which becomes the spokesperson of styles, tastes and tales that lead from the local to the international.

Arch. Francesco Lucchese is the founder of Lucchesedesign Studio, a multidisciplinary organization that works in the architecture and design fields while coordinating branding, communication, strategic and exhibitions projects for Italian and international companies. Francesco Lucchese is also a Professor of the Design Faculty at Politecnico di Milano.

Atmosfera è un progetto originale che celebra la nostra passione per la ceramica attraverso la formulazione di nuove proposte per il mondo dell'arredo e del complemento.

La materia diventa veicolo di emozioni, creatrice di scenari unici al contempo evocativi e concreti. Le superfici possono infondere infatti un carattere specifico agli spazi, creando atmosfere sempre diverse.

La multidisciplinarietà, l'inclusione di figure differenti che lavorano in sinergia e la qualità tipica del Made in Italy sono la forza di Atmosfere, che si fa portavoce di stili, gusti e racconti che dal locale portano all'internazionale.

L'architetto Francesco Lucchese è il fondatore dello studio Lucchesedesign, realtà multidisciplinare che affianca al design di prodotto e all'architettura il coordinamento di progetti di posizionamento aziendale, eventi e strategie di comunicazione per aziende italiane ed internazionali. Parallelamente alle attività di progetto, Francesco Lucchese porta avanti l'attività di docenza al Politecnico di Milano presso la Facoltà di Design.



CERAMICS

FINISHES | FINITURE

RANGE 1 | FASCIA 1

01

Marmo Apuano *satın*



12 mm

02

Marmo Calacatta *satın*



12 mm

03

Beton Ivory *matt*



12 mm

04

Beton Grey *matt*



12 mm

05

Vicentina Cenere *matt*



12 mm

06

Betometal Copper EVO *matt*



12 mm

FINISHES | FINITURE

RANGE 1 | FASCIA 1

07



Betonmetal Black Steel EVO *matt*

12 mm

10



Concrete Crete *satin*

12 mm

08



Concrete White *satin*

12 mm

11



Limestone Sand *satin*

12 mm | 20 mm

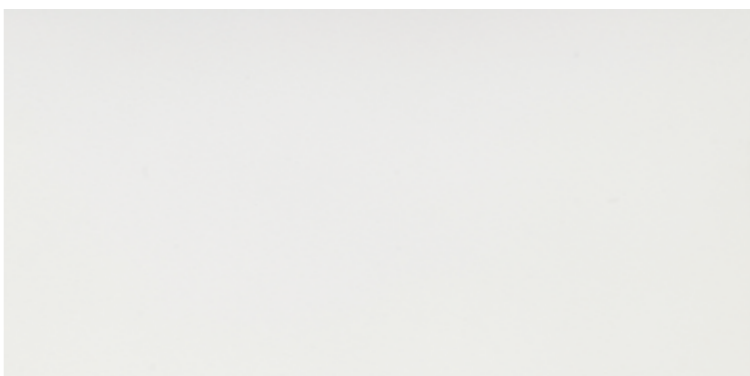
09



Concrete Smoke *satin*

12 mm

12



Solid Color White *satin*

12 mm | 20 mm

FINISHES | FINITURE

RANGE 1 | FASCIA 1

13



Solid Color Black *satin*

12 mm

14



Dolmen Pro Grigio *fiammato*

12 mm | 20 mm

15



Kone Grey *hammered*

12 mm

FINISHES | FINITURE

RANGE 2 | FASCIA 2

16

Imperiale satin



12 mm

20

Capraia lux



12 mm

17

Ceppo di Grè Grey satin



12 mm

21

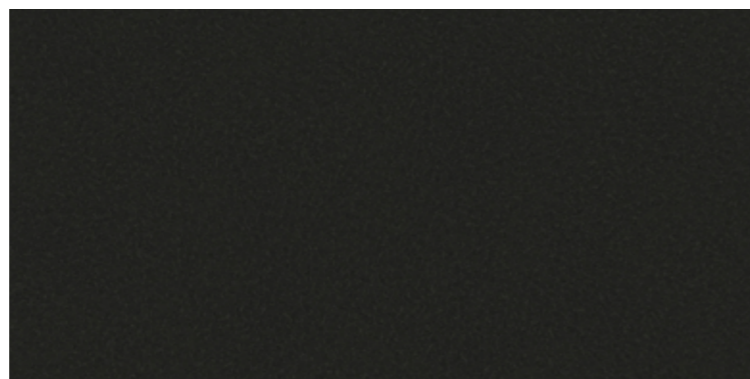
Golden White lux | satin



12 mm

18

19 *Granito Black satin | *fiammato*



12 mm | *20 mm

22

Statuario lux | satin



12 mm

FINISHES | FINITURE

RANGE 2 | FASCIA 2

23

Elegant Black *lux | satin*



12 mm

26

Soapstone Dark *fiammato*



12 mm | 20 mm

24

Gris du Gent *satin*



12 mm

27

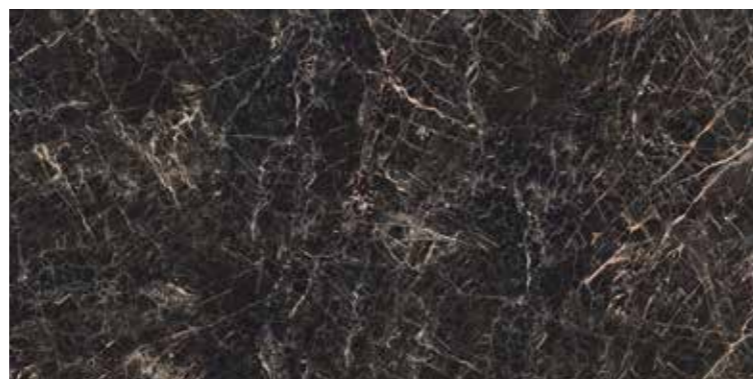
Calacatta Imperiale *polished | silk*



12 mm

25

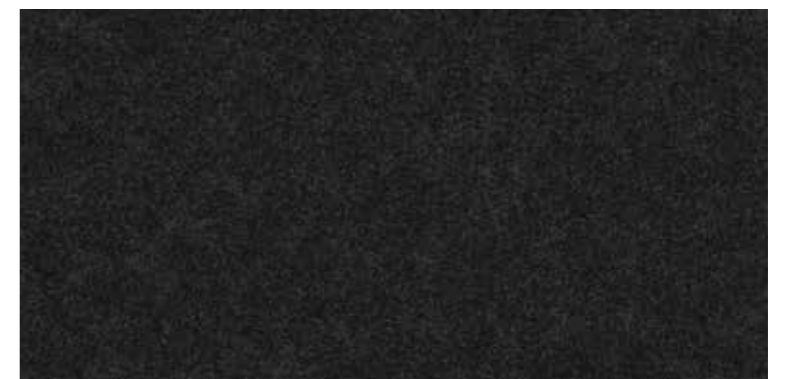
Saint Laurent *lux | satin*



12 mm

28

Nero Zimbabwe *fiammato*



12 mm | 20 mm

FINISHES | FINITURE

RANGE 2 | FASCIA 2

29

Calacatta Extra *polished | silk*



12 mm | 20 mm

30

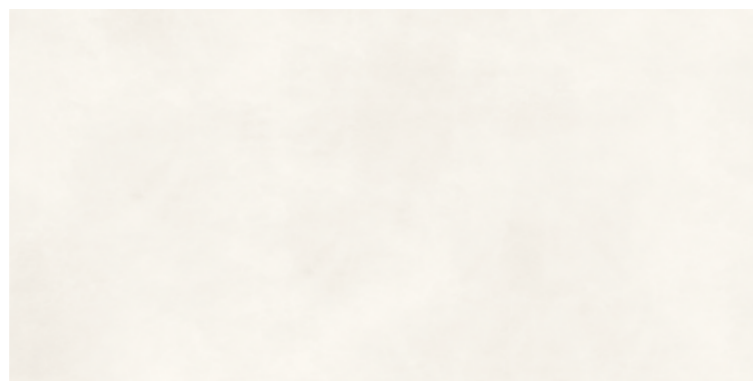
Concrete Grey *satın*



12 mm

31

Calce Avorio *mat*



12 mm

32

Calce Tortora *mat*



12 mm

33

Calce Antracite *mat*



12 mm | 20 mm

34

Calce Nero *mat*



12 mm | 20 mm

FINISHES | FINITURE

RANGE 3 | FASCIA 3

35

Sahara Noir *lux / satin*



12 mm

36

37 Nero Marquina *polished / satin / *silk*



12 mm | *20 mm

38

Grigio Carnico *polished*



12 mm

39

Pietra di Savoia Perla *bocciardata*



12 mm | 20 mm

40

Pietra di Savoia Grigia *bocciardata*



12 mm | 20 mm

41

Fokos Sale *matt*



12 mm | 20 mm

FINISHES | FINITURE

RANGE 3 | FASCIA 3

42

Fokos Roccia *matt*



12 mm | 20 mm

43

Ossido Bruno *matt*



12 mm | 20 mm

44

Ossido Nero *matt*



12 mm | 20 mm

FINISHES | FINITURE

RANGE 4 | FASCIA 4

45

Ossido Verderame *matt*



12 mm

48

Noir Desir *lucido | opaco*



12 mm | 20 mm

46

Calacatta Michelangelo *lucido | opaco*



12 mm | 20 mm

49

Ardesia Bianco *a spacco*



12 mm | 20 mm

47

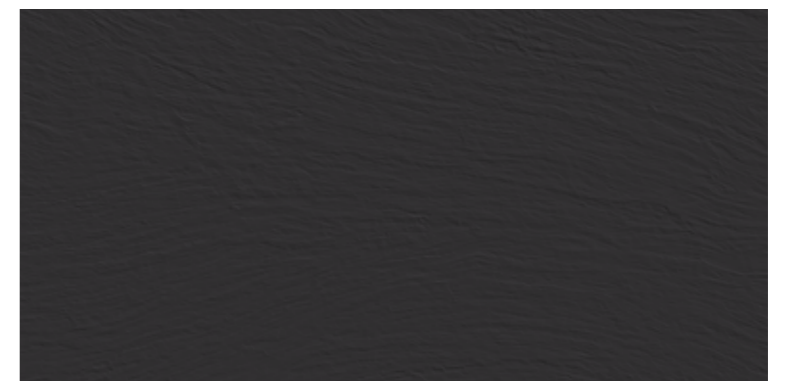
Statuario Altissimo *lucido | opaco*



12 mm | 20 mm

50

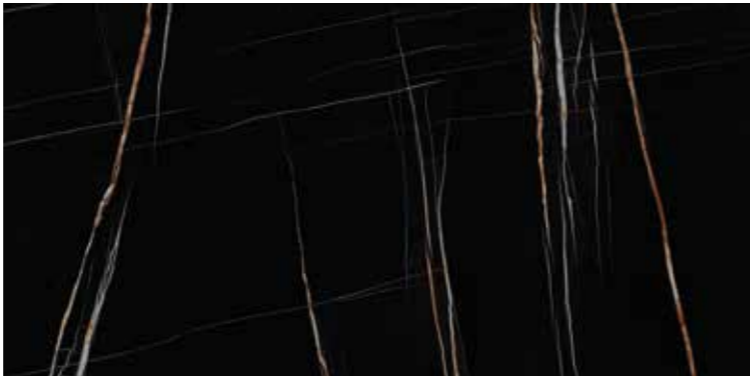
Ardesia Nero *a spacco*



12 mm | 20 mm

FINISHES | FINITURE

RANGE 4 | FASCIA 4



51

Sahara Noir Extra *bocciardato*

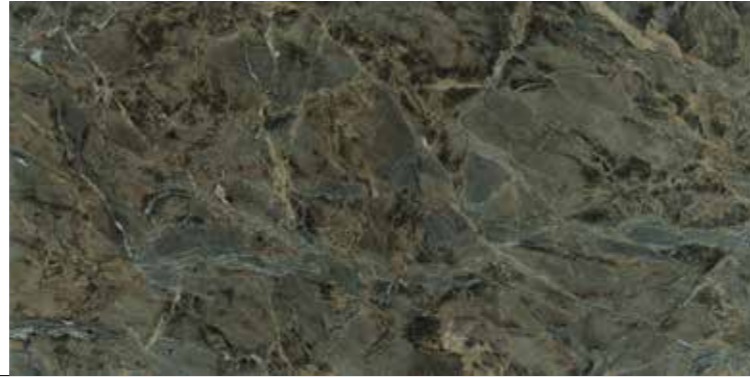
12 mm

FINISHES | FINITURE

PREMIUM RANGE | FASCIA PREMIUM

52

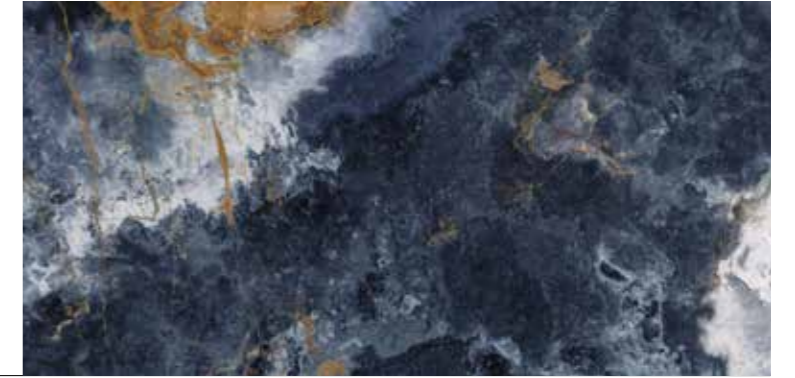
Verde Borgogna *lux | satin*



12 mm

55

Ocean Blue *polished*



12 mm

53

Quarzo Bluegrey *lux | satin*



12 mm

56

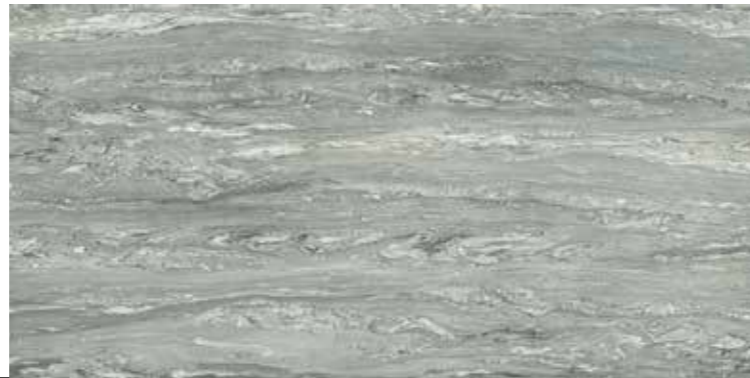
Blue Roma *polished | silk*



12 mm

54

Verde Cipollino *lux | satin*



12 mm

57

Invisible White *polished | nature*



12 mm

FINISHES | FINITURE

PREMIUM RANGE | FASCIA PREMIUM

58

Calacatta Green polished | silk



12 mm

59

Paonazzo Biondo polished | silk

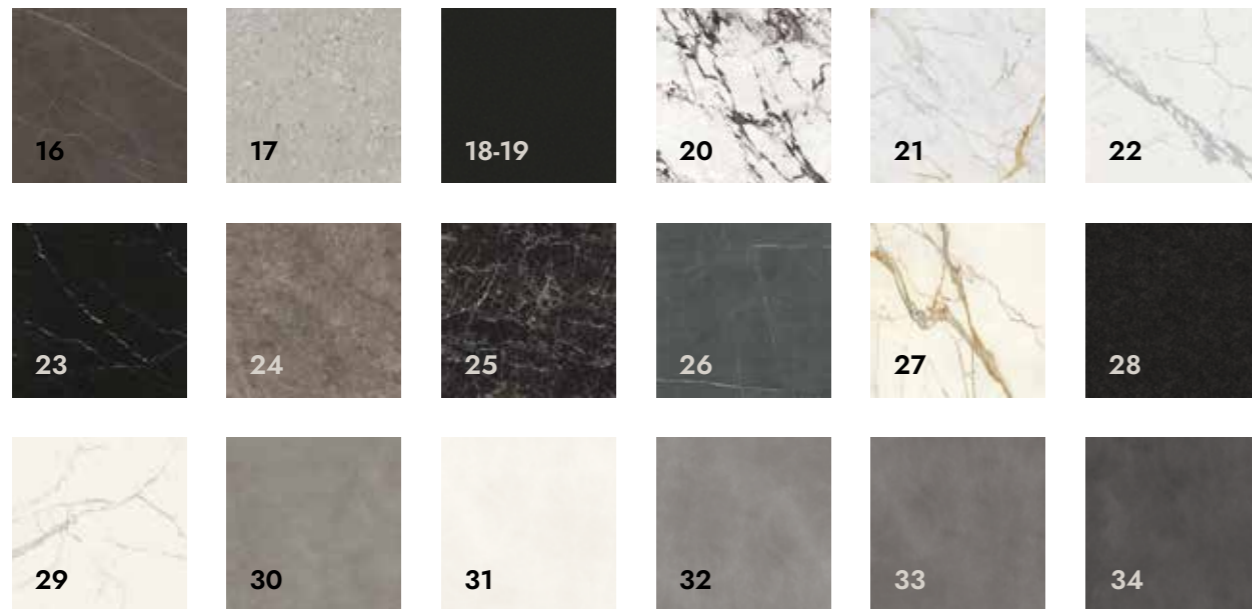


12 mm

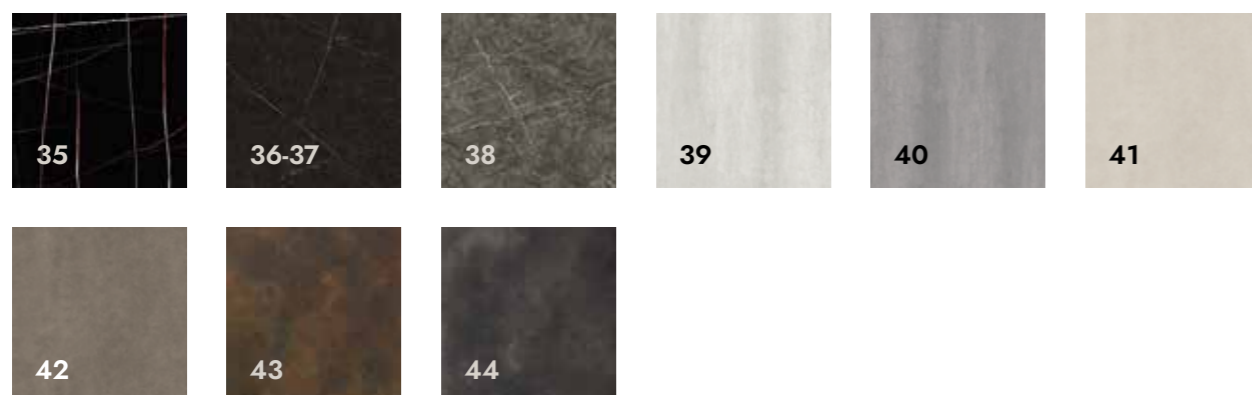
FINISHES RANGE 1 | FINITURE FASCIA 1



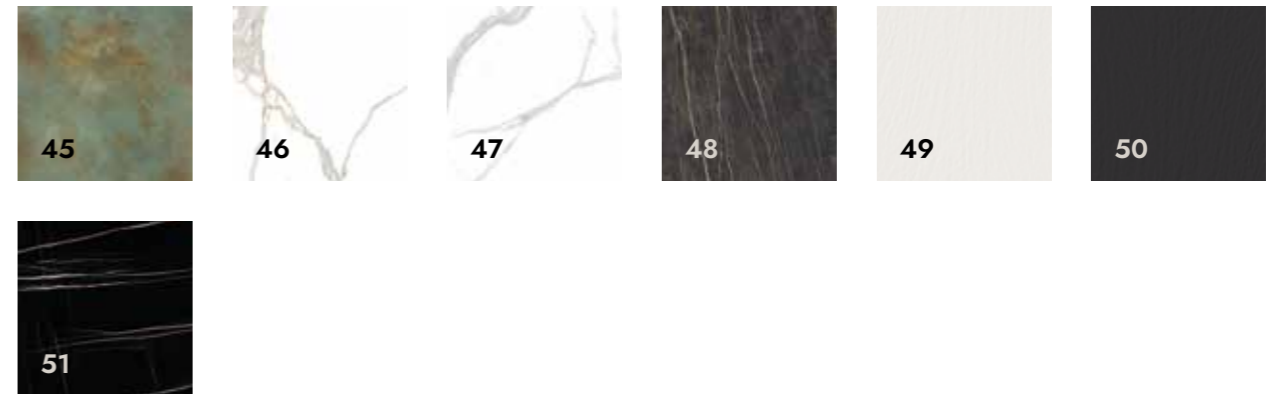
FINISHES RANGE 2 | FINITURE FASCIA 2



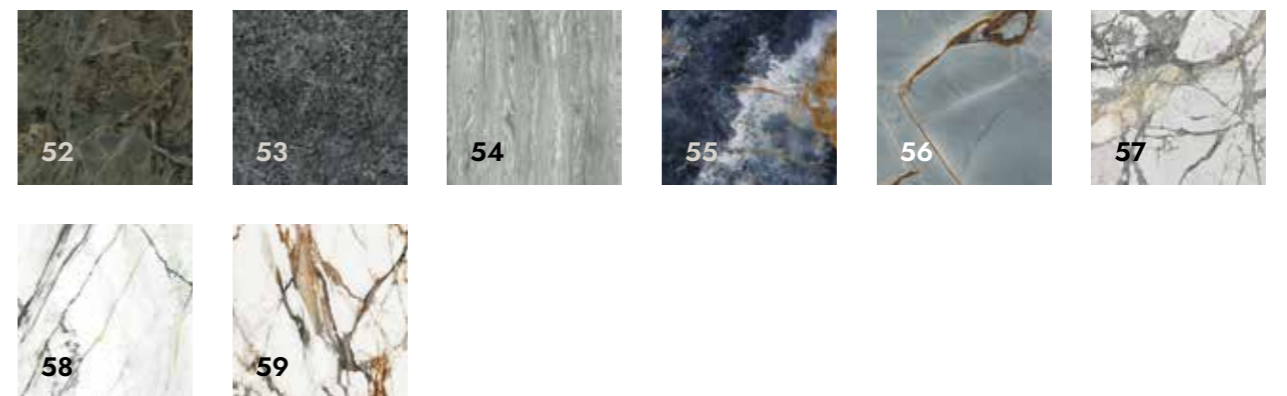
FINISHES RANGE 3 | FINITURE FASCIA 3



FINISHES RANGE 4 | FINITURE FASCIA 4



FINISHES PREMIUM RANGE | FINITURE FASCIA PREMIUM



COLLECTIONS

DINING TABLES

As in the best orchestral line-ups, different shapes and materials come together to create a complete and heterogeneous dining tables collection.

Metallic structures are added to the more traditional wooden ones, giving the products a crosscutting character that makes them suitable for different environments and tastes.

TAVOLI DA PRANZO

Così come nelle migliori formazioni orchestrali, forme e materiali diversi si combinano in questa collezione di tavoli a creare un insieme eterogeneo e completo.

Strutture in metallo vanno ad affiancarsi alle più tradizionali strutture in legno, garantendo ai prodotti un carattere trasversale adatto a diversi spazi e a diversi gusti.

ORCHESTRA

VIOLIN

DINING TABLE

VAT excluded, transport included
Iva esclusa, trasporto incluso

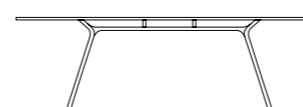


SIZES AND SHAPES | DIMENSIONI E FORME



SIZE 01 / 240x125 H74 cm

SIZE 02 / 220x95 H74 cm



SIZE 03 / 260x125 H74 cm

SIZE 04 / 220x110 H74 cm

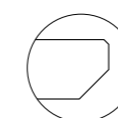
METAL STRUCTURE | STRUTTURA IN METALLO



Supporting foot / silver | black
Piedino base / silver | nero

WOODEN STRUCTURE | STRUTTURA IN LEGNO

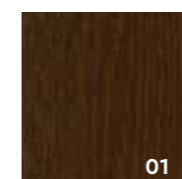
CERAMIC TOP | TOP IN CERAMICA



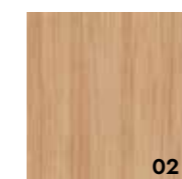
All edges are beveled and inclined
I bordi sono bisellati e inclinati

See "Ceramics" section
Vedi capitolo "Ceramiche"

WOODEN STRUCTURE | STRUTTURA IN LEGNO



01



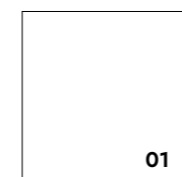
02



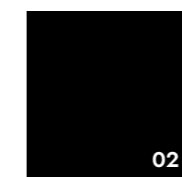
03

01 / Noce Canaletto
02 / Rovere Chiaro
03 / Rovere Scuro

METAL STRUCTURE | STRUTTURA IN METALLO



01



02

01 / White Bianco
02 / Black Nero



TABLE | TAVOLO VIOLIN / 240x125 Calacatta Green polished - Metal structure | *Struttura in metallo Black*
FLOOR | PAVIMENTO Cluster White 120x120 matt

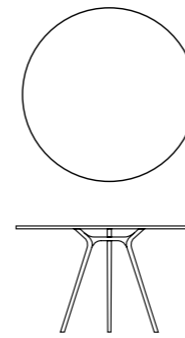
VIOLIN

DINING TABLE

VAT excluded, transport included
Iva esclusa, trasporto incluso



SIZES AND SHAPES | DIMENSIONI E FORME



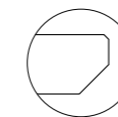
SIZE 05 / 130x130 H74 cm

SIZE 06 / 150x150 H74 cm



Supporting foot for metal structure / silver | black
Piedino base per struttura metallica / silver | nero

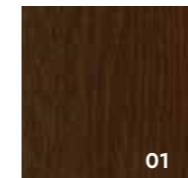
CERAMIC TOP | TOP IN CERAMICA



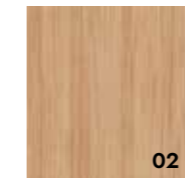
All edges are beveled and inclined
I bordi sono bisellati e inclinati

See "Ceramics" section
Vedi capitolo "Ceramiche"

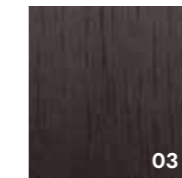
WOODEN STRUCTURE | STRUTTURA IN LEGNO



01



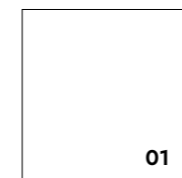
02



03

01 / Noce Canaletto
02 / Rovere Chiaro
03 / Rovere Scuro

METAL STRUCTURE | STRUTTURA IN METALLO



01



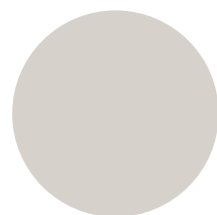
02

01 / White Bianco
02 / Black Nero

ORCHESTRA

THE COLLECTION

VIOLIN



SIZE 01 / 240x125 H74 cm
SIZE 02 / 220x95 H74 cm
SIZE 03 / 260x125 H74 cm
SIZE 04 / 220x110 H74 cm

SIZE 05 / 130x130 H74 cm
SIZE 06 / 150x150 H74 cm

TABLE | TAVOLO VIOLIN / 130x130 / Golden White lux - Noce Canaletto
FLOOR | PAVIMENTO Norse Ash 120x120 matt
CHAIR | SEDIA BASILICA Noce Canaletto



A collection of extendable tables that, thanks to simple but modern mechanisms, manage to merge functionality with the aesthetic touch of porcelain stoneware.

Una collezione di tavoli allungabili che, grazie a meccanismi semplici ma all'avanguardia, riescono a combinare la funzionalità con l'estetica del gres.

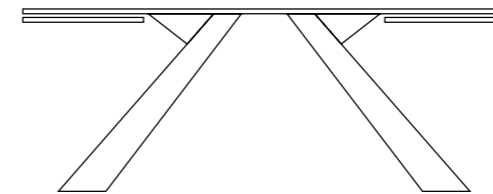
**EXTENDABLE
TABLES**

PROSPETTIVA

EXTENDABLE DINING TABLE



SIZES AND SHAPES | DIMENSIONI E FORME



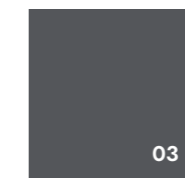
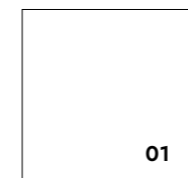
SIZE / 200-300x95 H74 cm

CERAMIC TOP | TOP IN CERAMICA



See "Ceramics" section
Vedi capitolo "Ceramiche"

METAL STRUCTURE | STRUTTURA IN METALLO



01 / White Bianco
02 / Titanium Titanio
03 / Anthracite Antracite

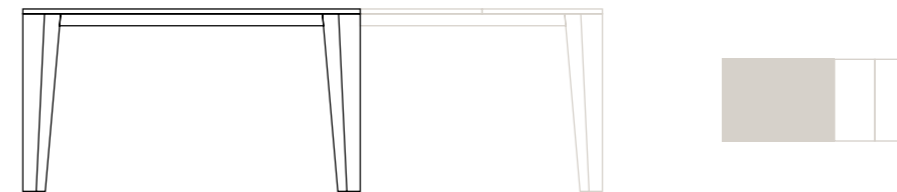


GEOMETRIA

EXTENDABLE DINING TABLE



SIZES AND SHAPES | DIMENSIONI E FORME



SIZE / 160-260x90 H74 cm

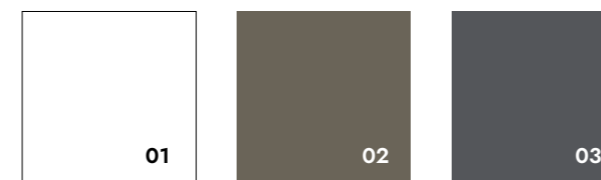
The extendable part of the table is in melamine and the color matches the chosen metal structure.
La parte allungabile del tavolo è in melaminico e il colore è abbinato alla struttura metallica scelta.

CERAMIC TOP | TOP IN CERAMICA



See "Ceramics" section
Vedi capitolo "Ceramiche"

METAL STRUCTURE | STRUTTURA IN METALLO

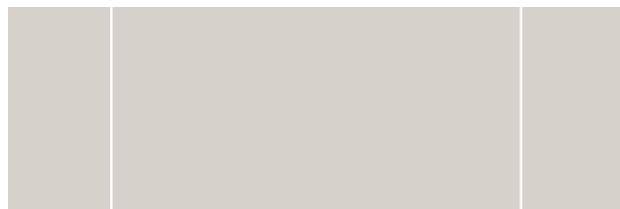


01 / White Bianco
02 / Titanium Titanio
03 / Anthracite Antracite

EXTENDABLE TABLES

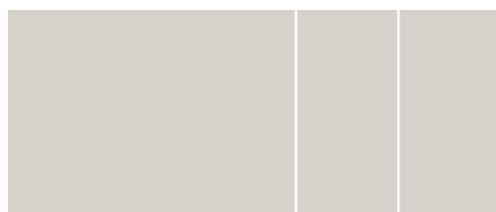
THE COLLECTION

PROSPETTIVA



SIZE / 200-300x95 H74 cm

GEOMETRIA



SIZE / 160-260x90 H74 cm



TABLE | TAVOLO **GEOMETRIA** / 260x90 / Dolmen Pro Grigio fiammato
Metal structure Anthracite | *Struttura in metallo Antracite*
FLOOR | PAVIMENTO Lagom Smoke 90x90 matt

DINING AND COFFEE TABLES

Inspired by the materials and harmonic proportions of Italian architecture, the “De architectura” collection shows how gres allows formal experimentation.

The tables come in different sizes and shapes in order to fit gracefully into a variety of spaces.

Design: Lucchesedesign Studio

TAVOLI DA PRANZO E TAVOLINI

Ispirata ai materiali e alle proporzioni dell'architettura classica italiana, la collezione “De architectura” esprime le possibilità di ricerca formale garantite dal gres.

I tavoli, di diverse forme e dimensioni, si adattano elegantemente ai più diversi contesti.

Design: Lucchesedesign Studio

DE ARCHITECTURA



VITRUVIO

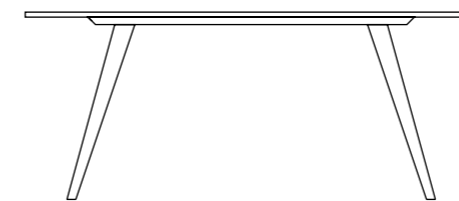
DINING TABLE



SIZES AND SHAPES | DIMENSIONI E FORME

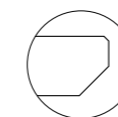


SIZE 01 / 260x120 H75,2 cm



SIZE 02 / 180x90 H75,2 cm

CERAMIC TOP | TOP IN CERAMICA



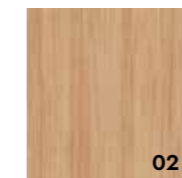
All edges are beveled and inclined
I bordi sono bisellati e inclinati

See "Ceramics" section
Vedi capitolo "Ceramiche"

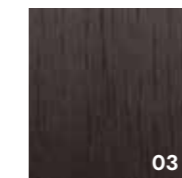
WOODEN STRUCTURE | STRUTTURA IN LEGNO



01



02



03

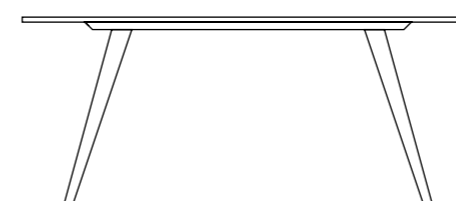
01 / Noce Canaletto
02 / Rovere Chiaro
03 / Rovere Scuro



SIZES AND SHAPES | DIMENSIONI E FORME

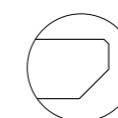


SIZE 01 / 260x120 H75,2 cm



SIZE 02 / 180x90 H75,2 cm

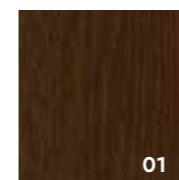
CERAMIC TOP | TOP IN CERAMICA



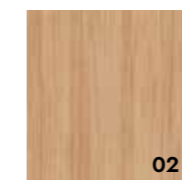
All edges are beveled and inclined
I bordi sono bisellati e inclinati

See "Ceramics" section
Vedi capitolo "Ceramiche"

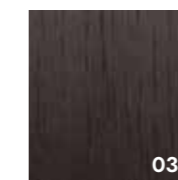
WOODEN STRUCTURE | STRUTTURA IN LEGNO



01



02



03

01 / Noce Canaletto
02 / Rovere Chiaro
03 / Rovere Scuro

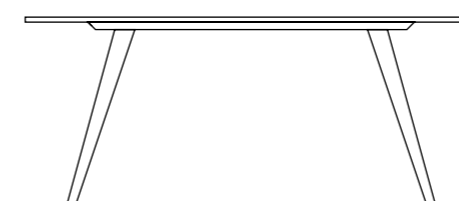




SIZES AND SHAPES | DIMENSIONI E FORME

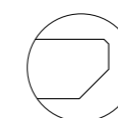


SIZE 01 / 260x120 H75,2 cm



SIZE 02 / 180x90 H75,2 cm

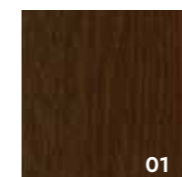
CERAMIC TOP | TOP IN CERAMICA



All edges are beveled and inclined
I bordi sono bisellati e inclinati

See "Ceramics" section
Vedi capitolo "Ceramiche"

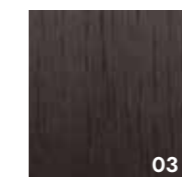
WOODEN STRUCTURE | STRUTTURA IN LEGNO



01



02



03

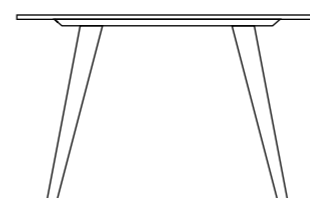
01 / Noce Canaletto
02 / Rovere Chiaro
03 / Rovere Scuro

BRAMANTE

DINING TABLE

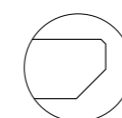


SIZES AND SHAPES | DIMENSIONI E FORME



SIZE / 120x120 H75,2 cm

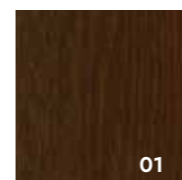
CERAMIC TOP | TOP IN CERAMICA



All edges are beveled and inclined
I bordi sono bisellati e inclinati

See "Ceramics" section
Vedi capitolo "Ceramiche"

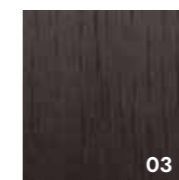
WOODEN STRUCTURE | STRUTTURA IN LEGNO



01



02



03

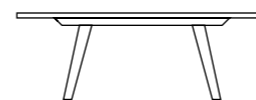
01 / Noce Canaletto
02 / Rovere Chiaro
03 / Rovere Scuro

BRAMANTE LOW

COFFEE TABLE

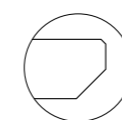


SIZES AND SHAPES | DIMENSIONI E FORME



SIZE / 100x100 H35,2 cm

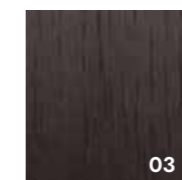
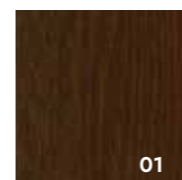
CERAMIC TOP | TOP IN CERAMICA



All edges are beveled and inclined
I bordi sono bisellati e inclinati

See "Ceramics" section
Vedi capitolo "Ceramiche"

WOODEN STRUCTURE | STRUTTURA IN LEGNO



01 / Noce Canaletto
02 / Rovere Chiaro
03 / Rovere Scuro



FILARETE LOW

COFFEE TABLE

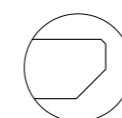


SIZES AND SHAPES | DIMENSIONI E FORME



SIZE / 115x50 H35,2 cm

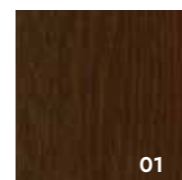
CERAMIC TOP | TOP IN CERAMICA



All edges are beveled and inclined
I bordi sono bisellati e inclinati

See "Ceramics" section
Vedi capitolo "Ceramiche"

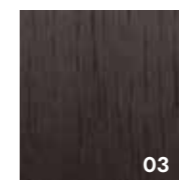
WOODEN STRUCTURE | STRUTTURA IN LEGNO



01



02



03

01 / Noce Canaletto
02 / Rovere Chiaro
03 / Rovere Scuro

GHIBERTI LOW

COFFEE TABLE

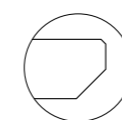


SIZES AND SHAPES | DIMENSIONI E FORME



SIZE / 115x50 H35,2 cm

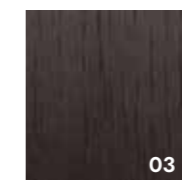
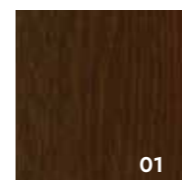
CERAMIC TOP | TOP IN CERAMICA



All edges are beveled and inclined
I bordi sono bisellati e inclinati

See "Ceramics" section
Vedi capitolo "Ceramiche"

WOODEN STRUCTURE | STRUTTURA IN LEGNO



01 / Noce Canaletto
02 / Rovere Chiaro
03 / Rovere Scuro



COFFEE TABLE | TAVOLINO CENTRALE Ghiberti Low / 115x50 / Vicentina Cenere matt - Rovere Chiaro
SIDE TABLE | TAVOLO DI SERVIZIO Palladio Low / 80x75 / Vicentina Cenere matt - Rovere Chiaro
FLOOR | PAVIMENTO Vicentina Cenere 60x60 matt

BRUNELLESCHI LOW

COFFEE TABLE

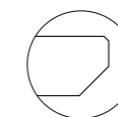


SIZES AND SHAPES | DIMENSIONI E FORME



SIZE / 85x85 H35,2 cm

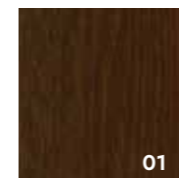
CERAMIC TOP | TOP IN CERAMICA



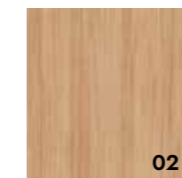
All edges are beveled and inclined
I bordi sono bisellati e inclinati

See "Ceramics" section
Vedi capitolo "Ceramiche"

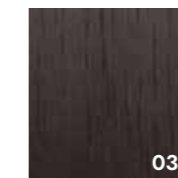
WOODEN STRUCTURE | STRUTTURA IN LEGNO



01



02



03

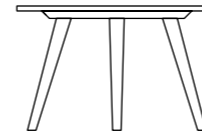
01 / Noce Canaletto
02 / Rovere Chiaro
03 / Rovere Scuro

PALLADIO LOW

SIDE TABLE

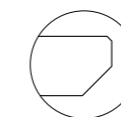


SIZES AND SHAPES | DIMENSIONI E FORME



SIZE / 80x75 H50 cm

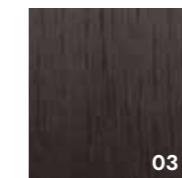
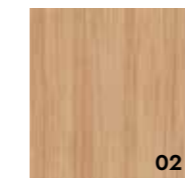
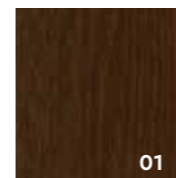
CERAMIC TOP | TOP IN CERAMICA



All edges are beveled and inclined
I bordi sono bisellati e inclinati

See "Ceramics" section
Vedi capitolo "Ceramiche"

WOODEN STRUCTURE | STRUTTURA IN LEGNO



01 / Noce Canaletto
02 / Rovere Chiaro
03 / Rovere Scuro

VITRUVIO



SIZE 01 / 260x120 H75,2 cm
SIZE 02 / 180x90 H75,2 cm

ALBERTI



SIZE 01 / 260x120 H75,2 cm
SIZE 02 / 180x90 H75,2 cm

VASARI



SIZE 01 / 260x120 H75,2 cm
SIZE 02 / 180x90 H75,2 cm

BRAMANTE / BRAMANTE LOW



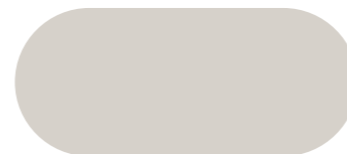
SIZE 01 / 120x120 H75,2 cm
SIZE 02 / 100x100 H35,2 cm

FILARETE LOW



SIZE / 115x50 H35,2 cm

GHIBERTI LOW



SIZE / 115x50 H35,2 cm

BRUNELLESCHI LOW



SIZE / 85x85 H35,2 cm

PALLADIO LOW



SIZE / 80x75 H50 cm



DINING TABLE

Simple lines and fine materials combine the practicality of timeless design with the pursuit of aesthetically pleasant details.

The Neoclassico table fits in different contexts, from the most traditional to the modern and minimal ones.

TAVOLO DA PRANZO

Linee semplici e materiali pregiati combinano la praticità di un design senza tempo alla ricerca estetica di dettagli piacevoli.

Il tavolo Neoclassico si adatta a contesti diversi, dal più tradizionale a quello più moderno e minimal.

NEOCLASSICO

NEOCLASSICO

DINING TABLE



SIZES AND SHAPES | DIMENSIONI E FORME



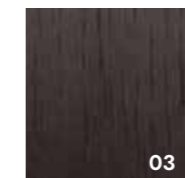
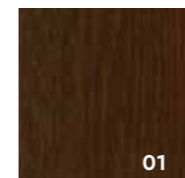
SIZE / 220x100 H75 cm

CERAMIC TOP | TOP IN CERAMICA



See "Ceramics" section
Vedi capitolo "Ceramiche"

WOODEN STRUCTURE | STRUTTURA IN LEGNO



01 / Noce Canaletto
02 / Rovere Chiaro
03 / Rovere Scuro



CHAIR

Basilica is a transversal piece of furniture that can fit into domestic or contract contexts in a quiet but not ordinary way.

The offspring of the great tradition of Italian craftsmanship with a simple and functional design, in perfect harmony with any type of interior, it is the synthesis of rational aesthetics and refined manufacturing details that make it unique.

Design: Paolo Cappello & Simone Sabatti

SEDIA

Basilica è un arredo trasversale che può inserirsi in contesti domestici o contract in modo silenzioso ma non banale.

Figlia della grande tradizione artigianale italiana con un design semplice e funzionale, in perfetta sintonia con qualsiasi tipo di interni è la sintesi tra un'estetica razionale ed una ricercatezza del dettaglio costruttivo che la rendono unica.

Design: Paolo Cappello & Simone Sabatti

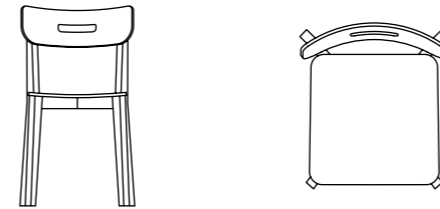
BASILICA

BASILICA

CHAIR

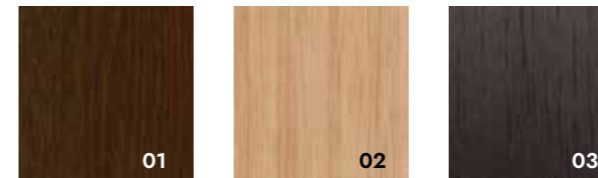


SIZES AND SHAPES | DIMENSIONI E FORME



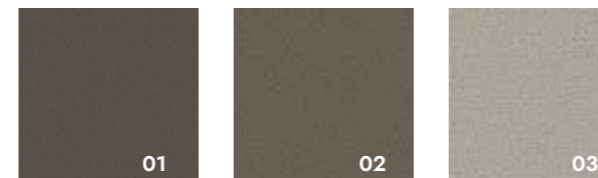
SIZE / 46x51 H80 cm

WOODEN STRUCTURE | STRUTTURA IN LEGNO



01 / **Noce Canaletto**
02 / **Rovere Chiaro**
03 / **Rovere Scuro**

FABRIC | TESSUTO



01 / LDS29 Hook
in combination with
Noce Canaletto
02 / LDS35 Chemistry
in combination with
Rovere Chiaro
03 / LDS08 Serendipity
in combination with
Rovere Scuro



CHAIR | **SEDIA BASILICA** 46x80x51 *Rovere Scuro*
 TABLE | **TAVOLO NEOCLASSICO** / 220x100 *Betonmetal Copper EVO matt - Rovere Scuro*
 FLOOR | **PAVIMENTO Lagom Oyster** 60x120 *matt*

UPHOLSTERED CHAIR | **SEDIA IMBOTTITA BASILICA** 46x80x51 *Rovere Chiaro* | FABRIC | **TESSUTO Chemistry Synergy Camira**
 TABLE | **TAVOLO ALBERTI 02** 180x90 / *Beton Grey matt - Rovere Chiaro*
 FLOOR | **PAVIMENTO Lagom Terrazzo Cloud** 60x60 *matt*

BATHROOM COLLECTION

Pleasant and balanced lines give life to a collection of bathroom cabinets that combine the functionality of storage to the simplicity given by neat shapes and sober colors.

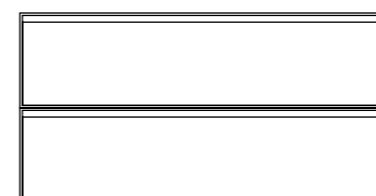
COLLEZIONE BAGNO

Forme piacevoli ed equilibrate generano una collezione di mobili da bagno che combinano la funzionalità del contenimento alla semplicità formale data da linee pulite e colori sobri.

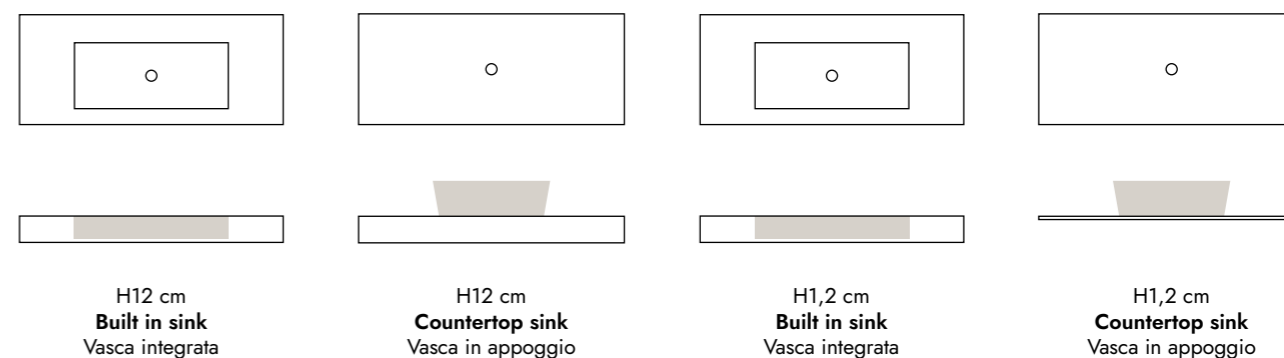
SYMPHONY



SIZES AND SHAPES | DIMENSIONI E FORME



SIZE 01 / 95x50 H49 cm
SIZE 02 / 120x50 H49 cm

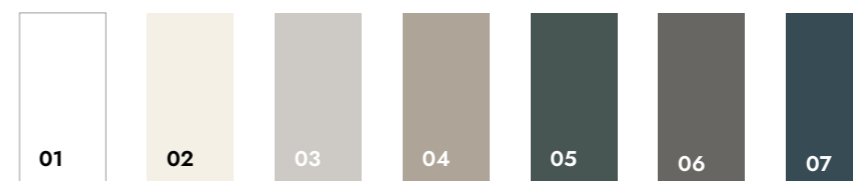


CERAMIC TOP | TOP IN CERAMICA



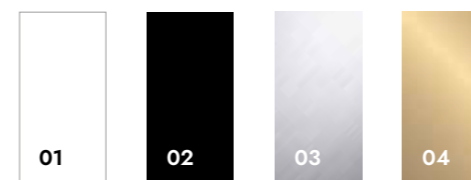
See "Ceramics" section
Vedi capitolo "Ceramiche"

LACQUERED WOOD STRUCTURE | STRUTTURA IN LEGNO LACCATO



01 / White
02 / Sambuco
03 / Grigio Efeso
04 / Stone
05 / Verde Comodoro
06 / Lavagna
07 / Blu Lapponia

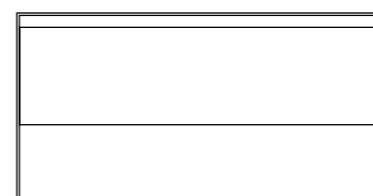
METAL FRAME | TELAIO METALLICO



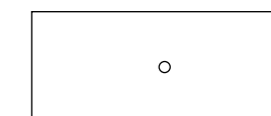
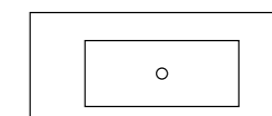
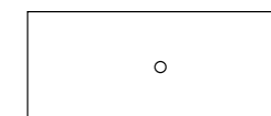
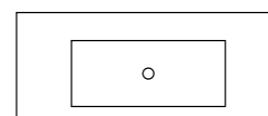
01 / White
02 / Black
03 / Brushed Steel
04 / Brushed Gold



SIZES AND SHAPES | DIMENSIONI E FORME



SIZE 01 / 95x50 H51 cm
SIZE 02 / 120x50 H51 cm



H12 cm
Built in sink
Vasca integrata

H12 cm
Countertop sink
Vasca in appoggio

H1,2 cm
Built in sink
Vasca integrata

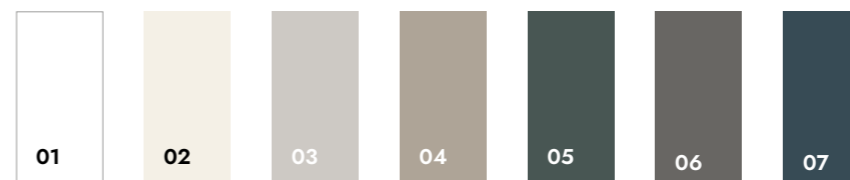
H1,2 cm
Countertop sink
Vasca in appoggio

CERAMIC TOP | TOP IN CERAMICA



See "Ceramics" section
Vedi capitolo "Ceramiche"

LACQUERED WOOD STRUCTURE | STRUTTURA IN LEGNO LACCATO



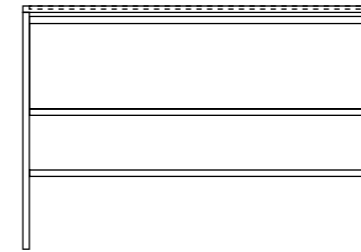
01 / White
02 / Sambuco
03 / Grigio Efeso
04 / Stone
05 / Verde Comodoro
06 / Lavagna
07 / Blu Lapponia



ANDANTE
BATHROOM CONSOLE



SIZES AND SHAPES | DIMENSIONI E FORME



SIZE / 110x50 H76 cm



H1,2 cm
Countertop sink
Vasca in appoggio

CERAMIC TOP | TOP IN CERAMICA



See "Ceramics" section
Vedi capitolo "Ceramiche"

METAL STRUCTURE | STRUTTURA IN METALLO



01 / *White Bianco*
02 / *Black Nero*
03 / *RAL 7044*
04 / *RAL 7016*

LACQUERED WOOD DRAWER | CASSETTO IN LEGNO LACCATO



01 / *White*
02 / *Stone*
03 / *RAL 7046*
04 / *Verde Comodoro*
05 / *Lavagna*
06 / *Blu Lapponia*



BATHROOM CABINET | *MOBILE BAGNO VIVACE L 120xH49/P 50*
Basin top porcelain stoneware | *Lavabo top gres porcellanato Capraia 320x160 lux*
Lacquered wood structure | *Struttura in legno laccato Lavagna*
WALL | *RIVESTIMENTO Stick Ocean Wave mosaic 29x30cm matt*
FLOOR | *PAVIMENTO Norse Crete 60x120 matt*

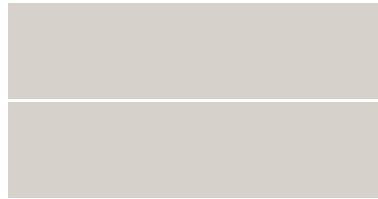
BATHROOM CABINET | *MOBILE BAGNO ANDANTE L 110xH 76/P 50*
Built-in top porcelain stoneware | *Top gres Ossido Verderame matt*
Lacquered wood drawer | *Cassetto in legno laccato RAL 7046*
BASIN | *LAVABO SEMI lucido*
WALL | *RIVESTIMENTO Cluster Graphite 120x120 matt*
FLOOR | *PAVIMENTO Stick Rusty Red 29x30 matt*



SYMPHONY

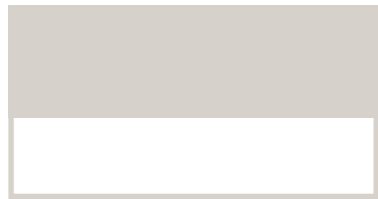
THE COLLECTION

VIVACE



SIZE 01 / 95x50 H49 cm
SIZE 02 / 120x50 H49 cm

ALLEGRO



SIZE 01 / 95x50 H51 cm
SIZE 02 / 120x50 H51 cm

ANDANTE



SIZE / 110x50 H76 cm

BATHROOM COLLECTION

The collection of bathroom furniture is inspired by the art of two icons, Michelangelo and Leonardo.

The elegance and harmony of Renaissance, the celebration of Italian culture and the depth of the geniuses' arts guide the creation of these bathroom elements.

Design: Lucchesedesign Studio

COLLEZIONE BAGNO

La collezione di mobili per l'area bagno si ispira all'arte di due icone, Michelangelo e Leonardo. L'eleganza e l'armonia del Rinascimento, la celebrazione della cultura italiana e la profondità delle arti dei due geni hanno orientato la creazione di questi elementi bagno.

Design: Lucchesedesign Studio

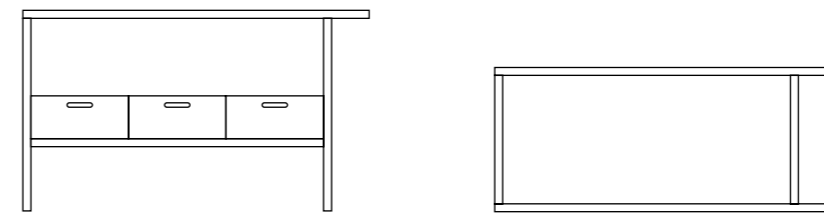
I GENI DELL'ARTE

MICHELANGELO

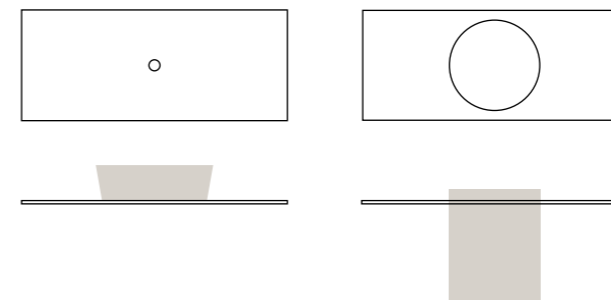
BATHROOM CONSOLE



SIZES AND SHAPES | DIMENSIONI E FORME



SIZE / 129x55 H76 cm



H1,2 cm
Countertop sink
Vasca in appoggio
With wooden boxes
Con scatole in legno

H1,2 cm
Traccia washbasin
Lavabo Traccia
Without wooden boxes
Senza scatole in legno

CERAMIC TOP | TOP IN CERAMICA



See "Ceramics" section
Vedi capitolo "Ceramiche"

WOODEN STRUCTURE | STRUTTURA IN LEGNO

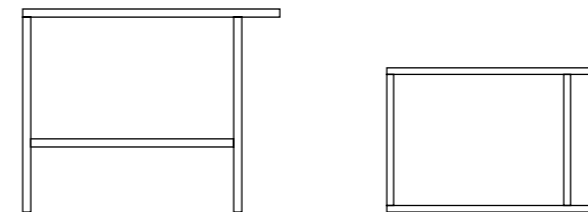


01 / Noce Canaletto
02 / Rovere Chiaro
03 / Rovere Scuro

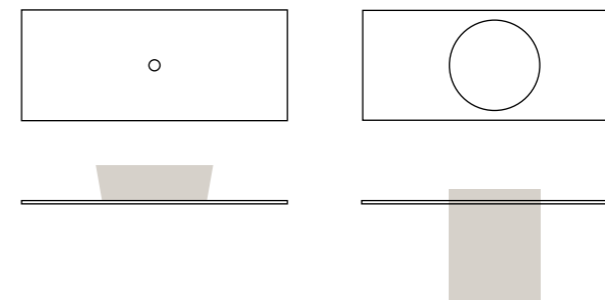




SIZES AND SHAPES | DIMENSIONI E FORME



SIZE / 95x66 H76 cm



H1,2 cm
Countertop sink
Vasca in appoggio

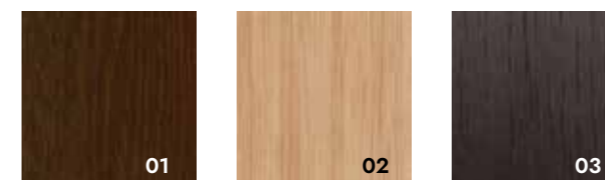
H1,2 cm
Traccia washbasin
Lavabo Traccia

CERAMIC TOP | TOP IN CERAMICA



See "Ceramics" section
Vedi capitolo "Ceramiche"

WOODEN STRUCTURE | STRUTTURA IN LEGNO



01 / Noce Canaletto
02 / Rovere Chiaro
03 / Rovere Scuro



LEGENI DELL'ARTE

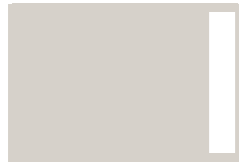
THE COLLECTION

MICHELANGELO



SIZE / 129x55 H76 cm

LEONARDO



SIZE / 95x66 H76 cm





WALL | RIVESTIMENTO *Light 6mm Vicentina Cenere 120x280 matt - Marmo Apuano 120x280 honed*
FLOOR | PAVIMENTO *Vicentina Cenere 60x60 matt*
CONSOLLE MICHELANGELO *Vicentina Cenere matt - Rovere Chiaro*
BASIN | LAVABO RIMA *Nero glossy*
SOAP DISPENSER | DISPENSER PER SAPONE ONDA *Nero glossy*
TOOTHBRUSH HOLDER | PORTASPAZZOLINO GOLFO *Bianco glossy*
MIRROR WITH SHELF | SPECCHIO CON MENSOLA AURORA *Rovere Chiaro*

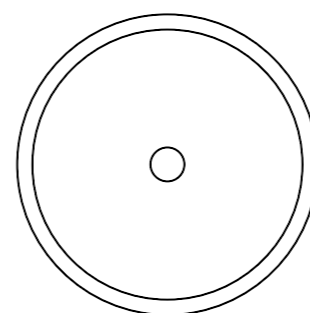
Washbasins, mirrors, and versatile accessories complete the Atmosfere bathroom collections, helping create a total look.

Lavabi, specchiere, accessori e complementi trasversali vanno a completare le collezioni bagno di Atmosfere, partecipando alla creazione di un total look.

BATHROOM ACCESSORIES



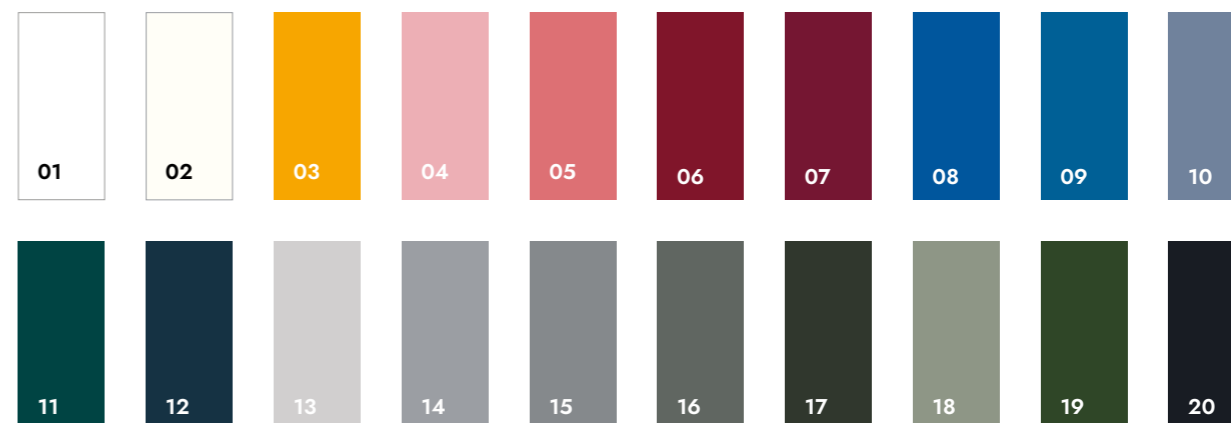
SIZES AND SHAPES | DIMENSIONI E FORME



Internal diameter Diametro interno 40 cm
External diameter Diametro esterno 44,5 cm
Height Altezza 16 cm
Drain hole Foro scarico D4 cm

Finish Finitura / **Glossy** Lucida

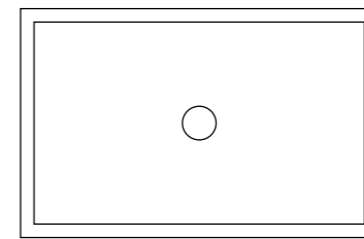
COLORS | COLORI







SIZES AND SHAPES | DIMENSIONI E FORME



Internal size Dimensioni interne 48,5x29,5 cm

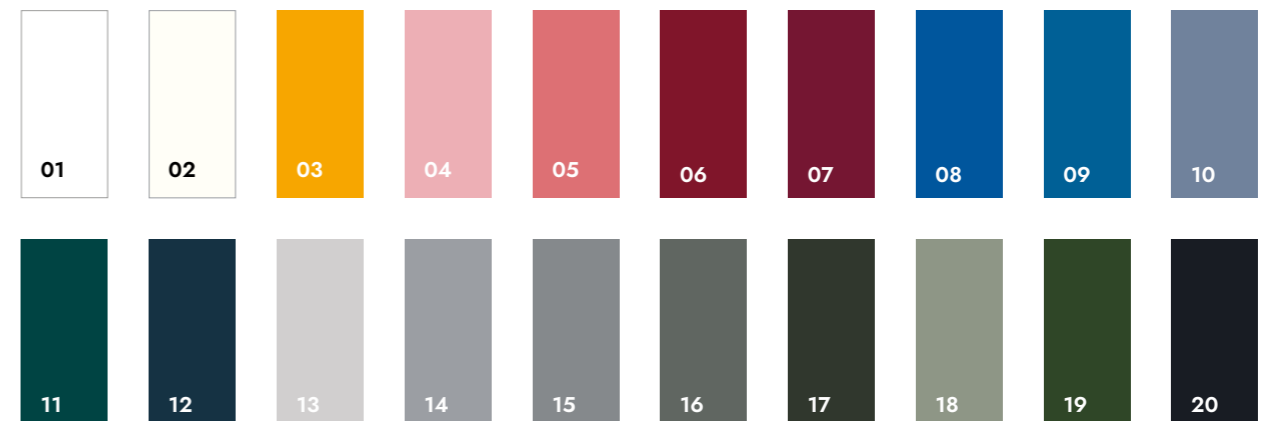
External size Dimensioni esterne 52,5x34 cm

Height Altezza 16 cm

Drain hole Foro scarico D4 cm

Finish Finitura / **Glossy** Lucida

COLORS | COLORI





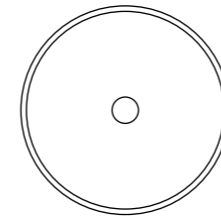
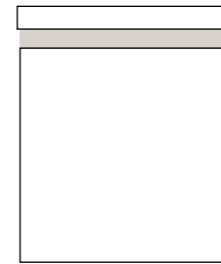
BASIN | LAVABO RIMA Grigio Perla glossy
CONSOLLE LEONARDO Marmo Apuano satin - Noce Canaletto
MIRROR WITH SHELF | SPECCHIO CON MENSOLA AURORA Noce Canaletto
TOOTHBRUSH HOLDER | PORTASPAZZOLINO GOLFO Grigio Perla glossy
WALL | RIVESTIMENTO Tbrick Apricot 5,2x16 glossy
FLOOR | PAVIMENTO Marmo Apuano 60x60 honed

TRACCIA

CERAMIC SEMI-RECESSED WASHBASIN

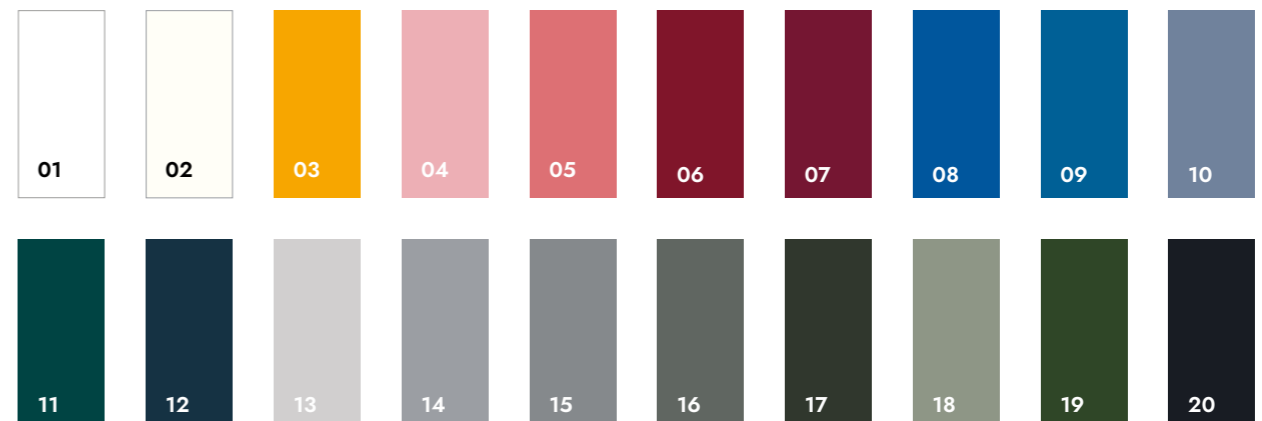


SIZES AND SHAPES | DIMENSIONI E FORME



External diameter Diametro esterno 38,5 cm
Height Altezza 45 cm
Drain hole Foro scarico D4,8 cm
Finish Finitura / **Glossy** Lucida

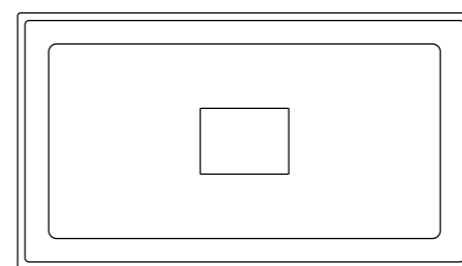
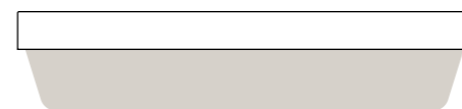
COLORS | COLORI







SIZES AND SHAPES | DIMENSIONI E FORME



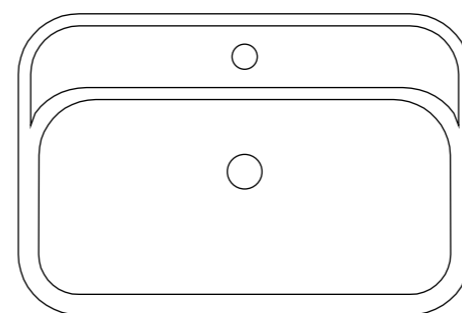
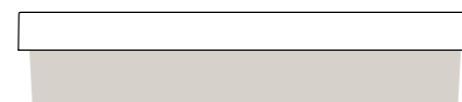
External size Dimensioni esterne 60x34 H5 cm
Internal size Dimensioni interne 58,5x32,5 H12,5 cm

Finish Finitura / **Matt** Opaco

NOTA
CERAMIC SEMI-RECESSED WASHBASIN



SIZES AND SHAPES | DIMENSIONI E FORME



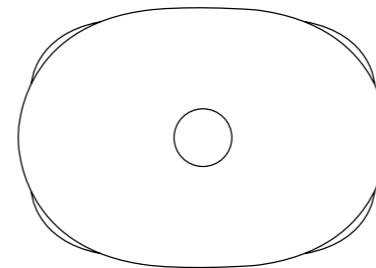
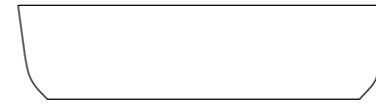
External size Dimensioni esterne 60x40 H5 cm
Internal size Dimensioni interne 58x27,5 H8 cm

Finish Finitura / **Glossy** Lucida

FORMA
CERAMIC COUNTERTOP WASHBASIN



SIZES AND SHAPES | DIMENSIONI E FORME



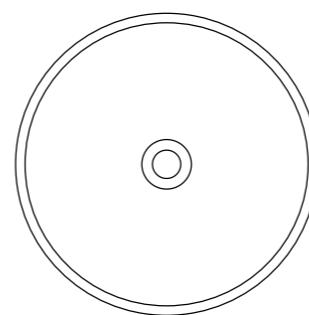
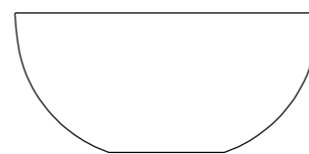
External size Dimensioni esterne 56x49 H14,2 cm
Internal size Dimensioni interne 55x38 H12 cm

Available finishes Finiture disponibili
Glossy / Matt Lucida / Matt

SEMI
SOLID SURFACE TEKNO COUNTERTOP WASHBASIN



SIZES AND SHAPES | DIMENSIONI E FORME



External size Dimensioni esterne 42x42 H19 cm
Internal size Dimensioni interne 41x41 H17,8 cm

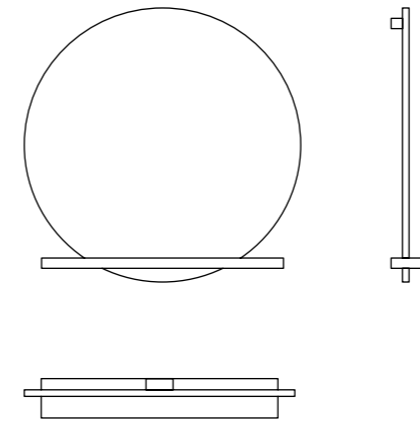
Finish Finitura / **Matt** Opaco



WALL | RIVESTIMENTO Hexa Cadet Blue 31,6x31,6 matt
FLOOR | PAVIMENTO Lagom Graphite 60x120 matt
SHOWER | DOCCIA Lagom White 90x90 matt
CONSOLLE MICHELANGELO Solid White satin - Rovere Chiaro
BASIN | LAVABO CAVA Grigio Antracite glossy
MIRROR | SPECCHIO AURORA Rovere Chiaro
TOOTHBRUSH HOLDER | PORTASPAZZOLINO GOLFO Grigio Antracite glossy
SOAP DISPENSER | DISPENSER PER SAPONE ONDA Grigio Antracite glossy



SIZES AND SHAPES | DIMENSIONI E FORME



SIZE / 80x80x12 cm

WOODEN STRUCTURE | STRUTTURA IN LEGNO



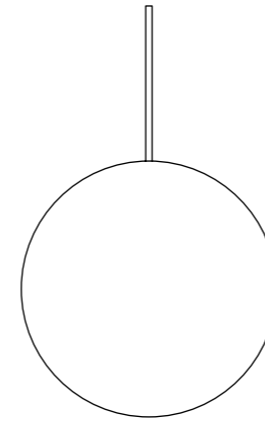
01 / Noce Canaletto
02 / Rovere Chiaro
03 / Rovere Scuro

RONDO

MIRROR



SIZES AND SHAPES | DIMENSIONI E FORME

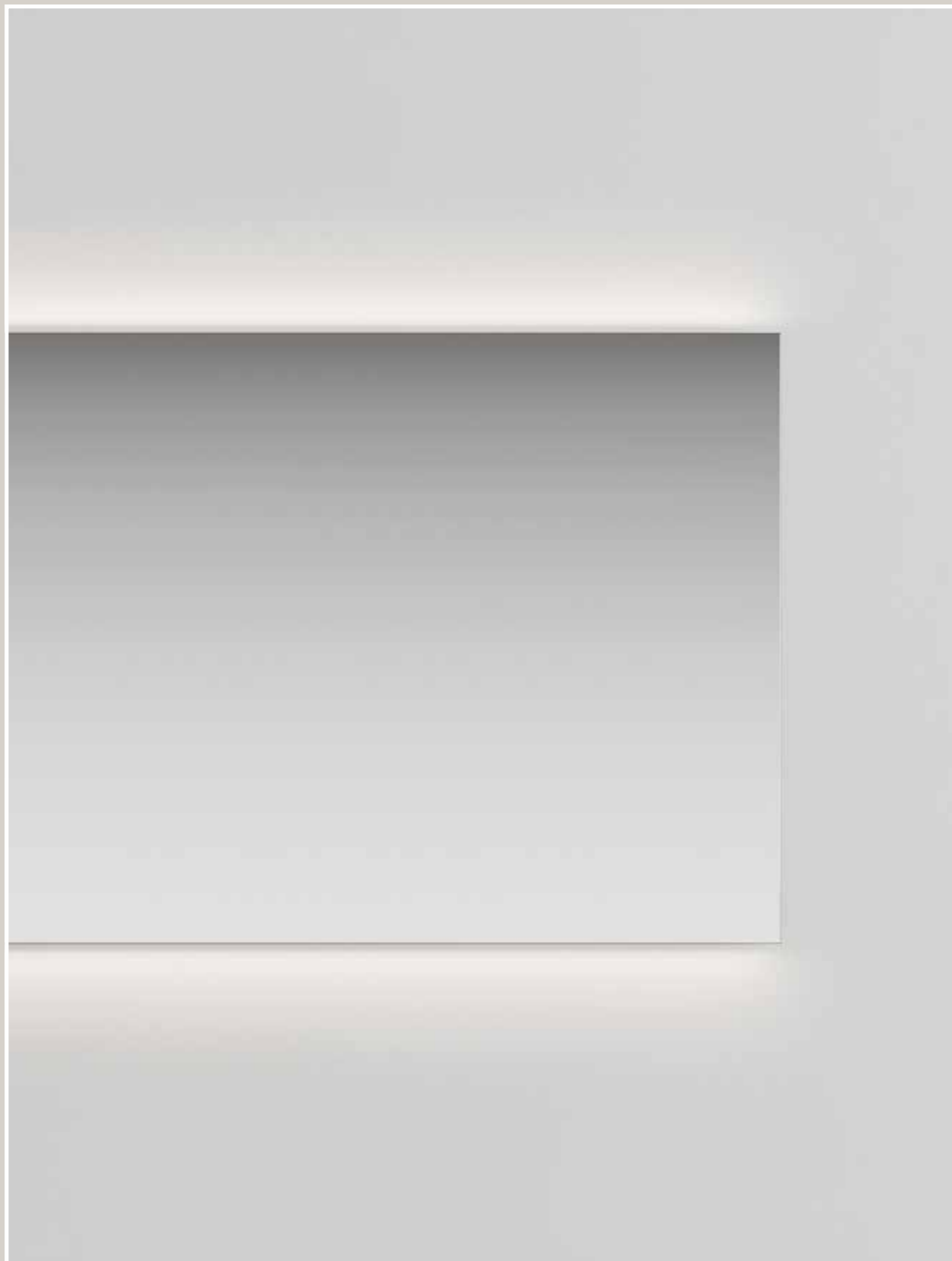


SIZE / 70x70 cm

Finish Finitura / **Black metal** Metallo nero

Round black metal mirror with decorative rod (h max. 80 cm)
Specchiera rotonda in metallo nero con asta decorativa (h max 80 cm)

SCORE
MIRROR WITH LED



SIZES AND SHAPES | DIMENSIONI E FORME



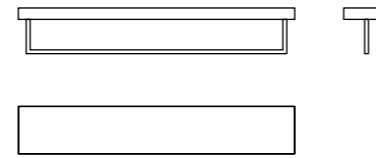
SIZE 01 / 95x73,4 cm
SIZE 02 / 120x73,4 cm

Finish Finitura / **Aluminium** Alluminio

Rectangular mirror with aluminium profile with LEDs above and below.
Specchiera rettangolare con profilo in alluminio con led sopra e sotto.

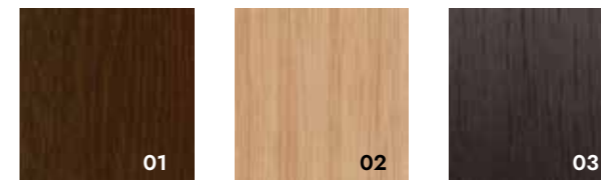


SIZES AND SHAPES | DIMENSIONI E FORME



SIZE / 70x12x12 cm

WOODEN STRUCTURE | STRUTTURA IN LEGNO



01 / Noce Canaletto
02 / Rovere Chiaro
03 / Rovere Scuro

SHELF | *MENSOLA LISA Rovere Scuro*
WALL | *RIVESTIMENTO Lagom Terrazzo Cloud 60x60 matt*
FLOOR | *PAVIMENTO Lagom Smoke 90x90 matt*

MIRROR WITH SHELF | *SPECCHIO CON MENSOLA AURORA Rovere Chiaro*
BASIN | *LAVABO RIMA Nero glossy*
SOAP DISPENSER | *DISPENSER PER SAPONE ONDA Nero glossy*
TOOTHBRUSH HOLDER | *PORTASPAZZOLINO GOLFO Bianco glossy*
CONSOLLE *MICHELANGELO Vicentina Cenere matt - Rovere Chiaro*
WALL | *RIVESTIMENTO Light 6mm Marmo Apuano 120x280 honed*
FLOOR | *PAVIMENTO Vicentina Cenere 60x60 matt*

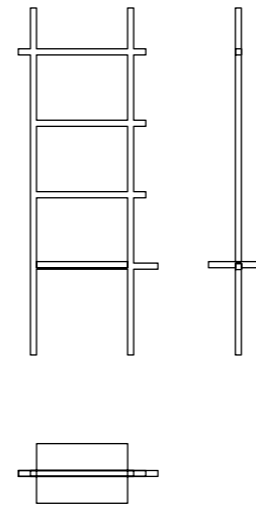


STRUCTURA

TOWEL RACK LADDER

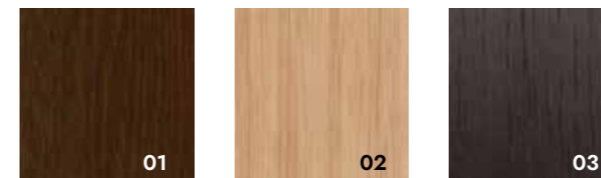


SIZES AND SHAPES | DIMENSIONI E FORME



SIZE / 69x30 H170 cm

WOODEN STRUCTURE | STRUTTURA IN LEGNO



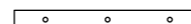
01 / Noce Canaletto
02 / Rovere Chiaro
03 / Rovere Scuro

EVA - EVA PLUS

CLOSING LISTEL - TOWEL HOLDER LISTEL

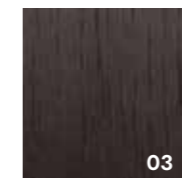
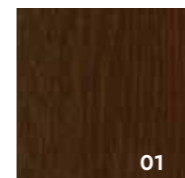


SIZES AND SHAPES | DIMENSIONI E FORME



EVA SIZE / 120x2 H6 cm
EVA PLUS SIZE / 60x2 H6 cm

WOODEN STRUCTURE | STRUTTURA IN LEGNO



01 / Noce Canaletto
02 / Rovere Chiaro
03 / Rovere Scuro



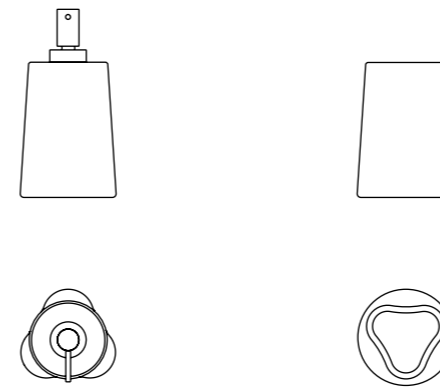
CLOSING LISTEL | LISTELLO CHIUSURA EVA 120x6 Rovere Scuro
TOWEL HOLDER LISTEL | LISTELLO PORTA ASCIUGAMANI EVA PLUS 60x6 Rovere Scuro
WALL | RIVESTIMENTO Lagom Beige 60x120 matt - Hexa Dutch White 31,6x31,6 matt
FLOOR | PAVIMENTO Lagom Beige 60x60 matt

ONDA - GOLFO

SOAP DISPENSER - TOOTHBRUSH HOLDER

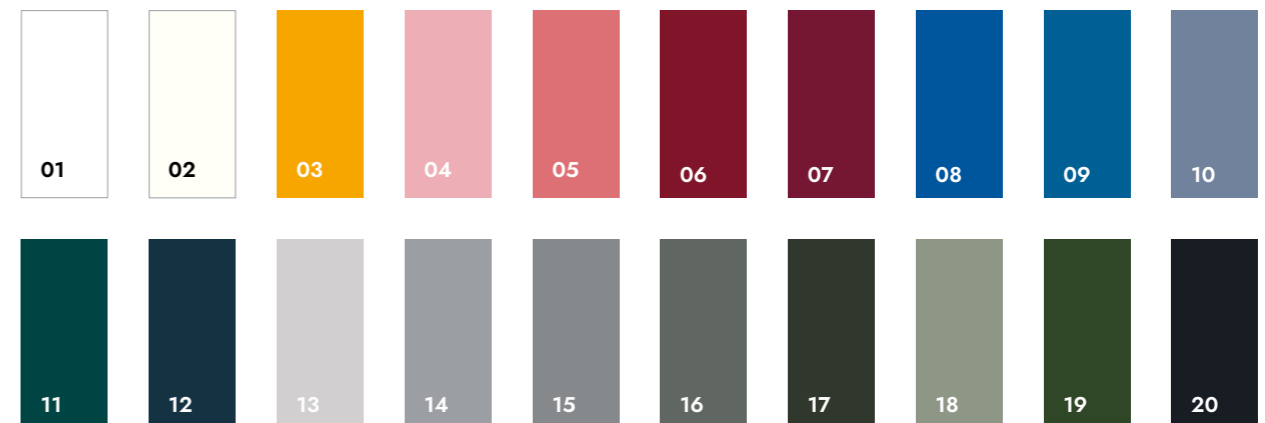


SIZES AND SHAPES | DIMENSIONI E FORME



ONDA SIZE / D7 H15 cm
GOLFO SIZE / D8 H11 cm

COLORS | COLORI



CUSTOM MADE

The artist's craftsmanship lies in being able to see the work of art in the marble block, in stone, in pure matter. By developing our porcelain stoneware collections in the 12mm thickness, we have increased the application potential of ceramics and designed a series of products that we can tailor to customize the living spaces to the top.

La maestria dell'artista risiede nel riuscire a vedere l'opera d'arte nel blocco di marmo, nella pietra, nella materia pura. Sviluppando le nostre collezioni in gres porcellanato nello spessore 12mm, abbiamo aumentato le potenzialità applicative della ceramica e ideato una serie di prodotti che possiamo realizzare su misura per personalizzare al massimo gli spazi abitativi.

CUSTOM MADE



WALL | RIVESTIMENTO Tbrick mix Seashell | Petroleum | Navy | Apricot 5,2x16 glossy
FLOOR | PAVIMENTO Fattamano mix Indigo | Ochra | White 7,5x38 glossy
KITCHEN TOP | TOP CUCINA Vicentina Cenere matt



WALL | RIVESTIMENTO Tbrick Shark 5,2x16 glossy
FLOOR | PAVIMENTO Romanza Gulliver 20,5x20,5 matt | Marmo Apuano 60x120 honed
KITCHEN TOP | TOP CUCINA Marmo Apuano satin







WALL | RIVESTIMENTO Micromosaics / Frammenti Black 30x30 matt
FLOOR | PAVIMENTO Lagom Terrazzo Storm 60x60 matt
KITCHEN TOP | TOP CUCINA Solid White satin

FLOOR | PAVIMENTO Lagom White 60x60 matt
KITCHEN TOP | TOP CUCINA Betonmetal Black Steel EVO matt
TABLE | TAVOLO Ghiberti Low 115x50 / Betonmetal Black Steel EVO matt - Rovere Chiaro



WALL | RIVESTIMENTO Micromosaics I Frammenti Sand 30x30 matt
FLOOR | PAVIMENTO Lagom Beige 60x60 matt
KITCHEN TOP | TOP CUCINA Marmo Calacatta satin

UNDERMOUNT HOLE
FORO SOTTOTOP

MATERIALS OPTIONS | *OPZIONI MATERIALI*

see pages 34-35 | *vedere pagine 34-35*





FLUSHMOUNT HOLE
FORO FILOTOP

MATERIALS OPTIONS | *OPZIONI MATERIALI*

see pages 34-35 | *vedere pagine 34-35*



BUILT IN SINK
VASCA INTEGRATA

MATERIALS OPTIONS | *OPZIONI MATERIALI*

see pages 34-35 | *vedere pagine 34-35*



ADVANTAGES OF PORCELAIN STONWARE

VANTAGGI DEL GRES PORCELLANATO

HARDNESS | DUREZZA

The hard surface of porcelain stoneware makes it a safe support with a high resistance to abrasion, scratches, wear and changes.

La durezza del gres porcellanato ne fa un supporto sicuro e con un'elevatissima resistenza ad abrasione, graffi, usura e alterazioni.

CHEMICAL AND PHYSICAL STABILITY INERZIA CHIMICO - FISICA

The chemical and physical composition of porcelain stoneware guarantees its resistance to attack by chemical agents and to any alteration, both for contact with acidic materials and for thermal shocks.

La stabilità chimico-fisica del gres porcellanato lo rende resistente agli agenti chimici e alle alterazioni, sia per contatto con materiali acidi sia per gli shock termici.

COMPACTNESS COMPATTEZZA

Porcelain stoneware is an excellent material for contact with food. Its compact and hard surface, absolutely non-porous, remains hygienic, does not absorb nor stain.

Il gres porcellanato è un ottimo materiale adatto al contatto con gli alimenti. La sua superficie compatta e resistente, non porosa, rimane igienica, non assorbe e non si macchia.

RESISTANCE | RESISTENZA



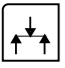



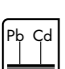


Porcelain stoneware is a high-performance material capable of withstanding heavy loads without breakage, as well as high temperatures.

Il gres porcellanato è un materiale versatile e capace di resistere a elevati carichi senza rotture, oltre che alle alte temperature.



Technical features unglazed porcelain stoneware Conforming to European Standards EN 14411 ISO 13006 App. G (Group Bla UGL with Eb ≤ 0,5%)









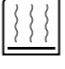

CARATTERISTICHE TECNICHE GRES PORCELLANATO TUTTA MASSA Conformi a Norme Europee EN 14411 ISO 13006 App. G (Gruppo Bla UGL con Eb ≤ 0,5%)
TECHNISCHE EIGENSCHAFTEN FEINSTEINZEUG DURCHGEFÄRBT Gemäß den Europäischen Normen EN 14411 ISO 13006 App. G (Gruppe Bla UGL mit Eb ≤ 0,5%)
CARACTERISTIQUES TECHNIQUES GRES CERAME PLEIN MASSE Conformes aux Normes Européennes EN 14411 ISO 13006 App. G (Groupe Bla UGL avec Eb ≤ 0,5%)

	TECHNICAL FEATURES CARATTERISTICHE TECNICHE TECHNISCHE DATEN CARACTERISTIQUE TECHNIQUE	TESTING METHOD METODICA DI PROVA PRÜFVERFAHREN NORME D'ESSAIS	REFERENCE STANDARD RIFERIMENTO NORMA STANDARDWERT RÉFÉRENCE NORME	TEST RESULTS VALORE PRODOTTO PRODUKT WERTE VALEUR PRODUIT	
	Sizes Dimensioni Abmessungen Dimensions	EN ISO 10545-2	N±15cm • Length and width - Lunghezza e larghezza - Länge und Breite - Longueur et largeur • Thickness - Spessore - Stärke - Epaisseur • Linearity - Rettilineità spigoli - Kantengeradheit - Rectitude des arêtes • Wedging - Ortogonalità - Rechtwinkligkeit - Orthogonalité • Warpage - Planarità - Ebenflächigkeit - Planité • Appearance percentage of acceptable tiles, per lot Aspetto: percentuale di piastrelle accettabili nel lotto Oberflächenbeschaffenheit: Prozentsatz der Fliesen, die den geforderten Eigenschaften entsprechen Aspect: pourcentage de carreaux acceptables sur la fourniture totale	(%) (mm) ±0,6% ±2,0mm ±0,5 ±1,5 ±0,5 ±2,0 0,5 ±2,0 95% min.	Compliant Conforme Erfüllt Conforme
	Water absorption Assorbimento d'acqua Wasseraufnahme Absorption d'eau	EN ISO 10545-3	E ≤ 0,5%	Average value 0,08% Valore medio 0,08% Durchschnittswert 0,08% Valeur moyenne 0,08%	
	Modulus of rupture Carico di rottura Bruchlast Charge de rupture	EN ISO 10545-4	sp. ≥= 7,5 mm min 1300 N	Compliant Conforme Erfüllt Conforme	
	Bending strength Resistenza alla flessione Biegefestigkeit Résistance à la flexion		>35 N/mm ²	Compliant Conforme Erfüllt Conforme	
	Abrasion resistance Resistenza all'abrasione Abriebbeständigkeit Résistance à l'abrasion	EN ISO 10545-6	< 175 mm ³	Compliant Conforme Erfüllt Conforme	
	Moisture expansion Dilatazione all'umidità Feuchtigkeitsexpansion Coefficient de dilatation à l'humidité	EN ISO 10545-10	Declared value Valore dichiarato Angegebener Wert Valeur déclaré	0,01%	
	Lead and cadmium discharge Determinazione della cessione di piombo e cadmio Blei- und Cadmiumentladung Perte de plomb et cadmium	EN ISO 10545-15	-	Absent Assente Abwesend Absent	
	Frost resistance Resistenza al gelo Frostbeständigkeit Résistance au gel	EN ISO 10545-12	*Pass according to ISO 10545-1 Test superato in accordo con ISO 10545-1 Test überstanden nach ISO 10545-1 Pv en accord avec norme en 10545-1	Resistant Resistente Widerstandsfähig Résistant	
	Resistance to low concentrations of acids and alkali Resistenza a basse concentrazioni di acidi e alcali Beständigkeit gegen schwach konzentrierten Säuren und Laugen Résistance à des basses concentrations d'acides et bases	EN ISO 10545-13	*Declared value Valore dichiarato Angegebener Wert Valeur déclaré	From ULA to ULB Da ULA a ULB Von ULA bis ULB De ULA jusqu'à ULB	
	Resistance to high concentrations of acids and alkali Resistenza a alte concentrazioni di acidi e alcali Beständigkeit gegen hoch konzentrierten Säuren und Laugen Résistance à des hautes concentrations d'acides et bases		*Declared value Valore dichiarato Angegebener Wert Valeur déclaré	From UHA to UHB Da UHA a UHB Von UHA bis UHB De UHA jusqu'à UHB	
	Resistance to domestic chemicals and additives for swimming pools Resistenza ai prodotti chimici di uso domestico e agli additivi per piscina Beständigkeit gegen chemischen Haushaltsreiniger und Zusatzstoffe für Schwimmbäder Résistance aux prod. chimiques d'usage domestique et additifs pour piscines		UB min.	UA	

* It's advisable to refer to Contract Division for all necessary guidelines to a correct use.
Si raccomanda di consultare Contract Division per le indicazioni necessarie al corretto utilizzo.
Zur korrekten Anwendung wird empfohlen mit unserem Contract Division Kontakt aufzunehmen.
Merci de consulter notre Contract Division pour les indications a un usage correct.

Technical features unglazed porcelain stoneware Conforming to European Standards EN 14411 ISO 13006 App. G (Group Bla UGL with Eb ≤ 0,5%)

CARATTERISTICHE TECNICHE GRÈS PORCELLANATO TUTTA MASSA Conformi a Norme Europee EN 14411 ISO 13006 App. G (Gruppo Bla UGL con Eb ≤ 0,5%)
TECHNISCHE EIGENSCHAFTEN FEINSTEINZEUG DURCHGEFÄRBT Gemäß den Europäischen Normen EN 14411 ISO 13006 App. G (Gruppe Bla UGL mit Eb ≤ 0,5%)
CARACTERISTIQUES TECHNIQUES GRES CERAME PLEIN MASSE Conformes aux Normes Européennes EN 14411 ISO 13006 App. G (Groupe Bla UGL avec Eb ≤ 0,5%)

	TECHNICAL FEATURES CARATTERISTICHE TECNICHE TECHNISCHE DATEN CARACTERISTIQUE TECHNIQUE	TESTING METHOD METODICA DI PROVA PRÜFVERFAHREN NORME D'ESSAIS	REFERENCE STANDARD RIFERIMENTO NORMA STANDARDWERT RÉFÉRENCE NORME	TEST RESULTS VALORE PRODOTTO PRODUKT WERTE VALEUR PRODUIT
	Stain resistance Resistenza alle macchie Fleckenbeständigkeit Résistance aux taches	EN ISO 10545-14	Declared value Valore dichiarato Angegebener Wert Valeur déclaré	CLASS 5
	Color resistance to light Resistenza dei colori alla luce Lichtbeständigkeit Résistance des couleurs à la lumière	DIN 51094	-	Compliant Conforme Erfüllt Conforme
	Fungi resistance Resistenza ai funghi Pilzresistenz Résistance aux mycètes	ASTM-G-21-15	Contact for 28 days with a variety of fungal strains Contatto per 28 giorni con diversi ceppi fungini 28 Tage Kontakt mit verschiedenen Pilzarten Contact pendant 28 jours avec différentes souches fongiques	No growth on the surface Nessuna crescita fungina in superficie Kein Pilzwachstum auf der Oberfläche Aucun développement fongique en surface
	SRI - Solar reflection index SRI - Indice di riflessione solare SRI - Sonnenreflexionsindex SRI - Indice de réflexion solaire	In-house test method	Illuminant D65 / Spectrophotometer at 10° Illuminante D65 / Spettrofotometro a 10° Leuchtkörper D65 / Spektralphotometer bei 10° Illuminante D65 / Spectrophotomètre à 10°	Available on request Disponibile su richiesta Auf Anfrage verfügbar Disponible sur demande
	Tendency to retain dirt Tendenza a trattenere lo sporco Neigt zur Zurückhaltung von Schmutz Tendance à retenir la saleté	UNI-9300:2015	Carbon black staining agent Macchiante Nero carbone Färbemittel kohlenwarz Tachant Noir carbone	No visible change Nessun cambiamento visibile Keine sichtbare Veränderung Aucun changement visible
	Contact with food Contatto con alimenti Kontakt mit Lebensmitteln Contact avec aliments	UNI-EN-1186:2003	Contact with solvents for 2 hours at 40° Contatto con diversi solventi per 2 ore a 40° 2 Stunden langer Kontakt mit verschiedenen Lösungsmitteln bei 40° Contact avec différents solvants pendant 2 heures à 40°	Available on request Disponibile su richiesta Auf Anfrage verfügbar Disponible sur demande
	Resistance to cold liquids Resistenza ai liquidi freddi Beständigkeit gegen kalte Flüssigkeiten Résistance aux liquides froids	UNI-EN-12720:2013	Period of contact 10s to 24h Tempi di contatto da 10s a 24h Kontaktzeit von 10s bis 24h Temp de contact de 10s à 24h	CEN TS 16209 Cl. B
	Resistance to moist Resistenza al calore umido Beständigkeit gegen feuchte Hitze Résistance à l'humidité	UNI-EN-12721:2013	55° to 100° cycles Cicli da 55° a 100° Zyklen von 55° bis 100° Cycles de 55° à 100°	No visible change CEN TS CEN TS 16209 Cl. B Nessun cambiamento visibile CEN TS CEN TS 16209 Cl. B Keine sichtbare Veränderung CEN TS CEN TS 16209 Cl. B Aucun changement visible CEN TS CEN TS 16209 Cl. B
	Resistance to dry heat Resistenza al calore secco Beständigkeit gegen trockene Hitze Résistance à la chaleur sèche	UNI-EN-12722:2013	55° to 180° cycles Cicli da 55° a 180° Zyklen von 55° bis 180° Cycles de 55° à 180°	No visible change CEN TS CEN TS 16209 Cl. B Nessun cambiamento visibile CEN TS CEN TS 16209 Cl. B Keine sichtbare Veränderung CEN TS CEN TS 16209 Cl. B Aucun changement visible CEN TS CEN TS 16209 Cl. B
	Thermal shock resistance Resistenza agli sbalzi termici Temperaturwechselbeständigkeit Résistance aux écarts de température	EN ISO 10545-9	-	Resistant Resistente Widerstandsfähig Résistant

* It's advisable to refer to Contract Division for all necessary guidelines to a correct use.
Si raccomanda di consultare Contract Division per le indicazioni necessarie al corretto utilizzo.
Zur korrekten Anwendung wird empfohlen mit unserem Contract Division Kontakt aufzunehmen.
Merci de consulter notre Contract Division pour les indications a un usage correct.

COMPOSITION

95% Virgin Wool, 5% Polyamide.

CLEANING

Vacuum regularly. Wipe with a damp cloth using soap and water or use proprietary upholstery shampoo. For deeper cleaning use steam or professionally dry clean. Full details can be found in Camira cleaning and disinfection's guide.

TECHNICAL FEATURES

ABRASION RESISTANCE

Heavy duty. 10 year guarantee.
Independently certified to $\geq 100,000$ Martindale cycles.

FLAMMABILITY

- EN 1021 - 1&2 (cigarette & match)
- BS 7176 Low Hazard
- NF D 60-013
- ÖNORM B 3825 & A 3800-1 (58 kg/m³ CMHR Foam)
- UNI 9175 Classe 1 IM
- EN 13501-1 Adhered Class D, s1, d0
- EN 13501-1 Un-adhered Class E, s2, d0
- BS 5852 Ignition Source 5 when FR treated
- BS 7176 Medium Hazard when FR treated
- EN 13501-1 Adhered Class B, s1, d0 when FR treated
- EN 13501-1 Un-adhered Class D, s2, d0 when FR treated
- BS 5867-2: Type B Curtains & Drapes when FR treated
- The Furniture and Furnishing (Fire Safety) Regulations 1988 (Domestic Cigarette and Match)
- IMO FTP Code (Part 8)

RESISTANCE TO LIGHT

ISO 105 - B02 Class 5

ABRASION RESISTANCE

ISO 105 - X12 Wet | Dry: 4

COMPOSIZIONE

95% Lana Vergine, 5% Poliammide.

PULIZIA

Passare regolarmente l'aspirapolvere. Pulire con un panno umido usando acqua e sapone o usare un detergente specifico per tappezzeria. Per una pulizia più profonda, utilizzare il vapore o un lavaggio a secco professionale. I dettagli possono essere trovati nella guida Camira alla pulizia e disinfezione.

CARATTERISTICHE TECNICHE

RESISTENZA ALL'ABRASIONE

Resistente. Garanzia di 10 anni.
Certificato indipendentemente a ≥ 100.000 cicli Martindale.

INFIAMMABILITÀ

- EN 1021 - 1&2 (sigarette e fiammiferi)
- BS 7176 Basso pericolo
- NF D 60-013
- ÖNORM B 3825 & A 3800-1 (Schiuma CMHR - Combustione modificata ad alta resilienza - 58 kg/m³)
- UNI 9175 Classe 1 IM
- EN 13501-1 Incollato Classe D, s1, d0
- EN 13501-1 Classe E Non incollata, s2, d0
- BS 5852 Sorgente di accensione 5 quando trattata con FR
- BS 7176 Pericolo medio quando trattato con FR
- EN 13501-1 Classe B Incollata, s1, d0 se trattato con FR
- EN 13501-1 Classe D Non incollata, s2, d0 se trattata con FR
- BS 5867-2: Tende e tendaggi di Tipo B se trattati con FR
- Il Regolamento 1988 su Mobili e Arredi (Sicurezza Antincendio) (Sigarette e fiammiferi domestici)
- Codice IMO FTP (Parte 8)

RESISTENZA ALLA LUCE

ISO 105 - B02 Classe 5

RESISTENZA ALL'ABRASIONE

ISO 105 - X12 Bagnato | Asciutto: 4

Fabrics for BASILICA upholstered chair.

Synergy is a rich wool fabric that represents natural simplicity.

An irresistibly soft, high performance material.

Delicately felted and soft to the touch, its understated design highlights the colourfulness of this carefully crafted fabric. The exquisite nuances are yarn-dyed.

Tessuti per sedia imbottita BASILICA.

Synergy è un ricco tessuto in lana che rappresenta la semplicità naturale.

Un materiale irresistibilmente morbido e dalle prestazioni elevate.

Delicatamente feltrato/felpato al tatto, il suo design sobrio mette in evidenza la colorazione di questo tessuto curato. Le squisite sfumature sono tinte in filo.

SERENDIPITY
LDS08

HOOK
LDS29

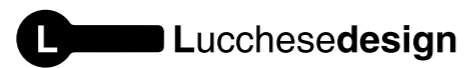
CHEMISTRY
LDS35



check our website:
visita il nostro sito:

www.atmosfere.design

in cooperation with:
in collaborazione con:





Atmosfere Srl

Piazza Cittadella, 6 | 37122 Verona (VR)

Showroom

Via Binelunghe 9, 37139 Verona (VR)

Via Viazza Il Tronco 45, 41042 Fiorano Modenese (MO)

www.atmosfere.design